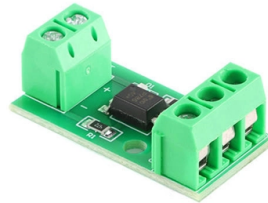


# 100Mbps optical module FC interface



## Overview

The 100FX SFP module for fast Ethernet (FE) ports provides a 100-Mbps optical link using LC connectors and 1310-nm MMF (multimode fiber) cable. The maximum transmission distance for this connection is 2 km. The FS® Fiber Channel Small Form-Factor Pluggable (SFP/SFP+/SFP28/SFP56/QSFP28) portfolio offers customers a wide variety of high-density and low-power 2G/4G/8G/16G/32G/64G/128G Fibre Channel connectivity options for data center, high-performance computing networks enterprise core and distribution. 100BASE FX SFP remains a widely used solution for deploying 100Mbps fiber connectivity in industrial, enterprise, and legacy Fast Ethernet networks. While Gigabit and higher-speed optics dominate modern data centers, many control systems, surveillance networks, transportation infrastructure, and. TL-FC111B-20 is a 100M media converter, providing a 100M RJ-45 port and a 100M SC fiber port, which can convert between electrical and optical signals. And long-distance data transmission through optical fiber can be applied to commercial scenarios such as park security monitoring and wireless. Smartoptics multiprotocol SFP+ transceivers support Fibre Channel speeds up to 16G and 10G Ethernet for storage, enterprise and mobile networks. SFP+ transceivers are focused on SAN protocols ranging from 1G up to 16G while also supporting other protocols such as Ethernet. 7 dB link budget and multi-rate operation from 4. High-quality optical connectors.

## Article Content

TL-FC111B-20 | 10/100 Mbps WDM Media Converter | TP-Link

TL-FC111B-20 is a 100M media converter, providing a 100M RJ-45 port and a 100M SC fiber port, which can convert between electrical and optical signals. And long-distance data transmission through

Complete Guide to Choosing the Right 100M Optical

In the vast ecosystem of network infrastructure, the humble 100M optical transceiver (or 100M SFP module) remains a critical workhorse for

1G to 16G FC & 10G Ethernet SFP+ transceivers

Smartoptics provides Brocade-approved SFP+ transceivers, tested for seamless interoperability with Fibre Channel storage networks. These transceivers support

10/100Mbps WDM Media Converter Datasheet

transmits data at 1550 nm wavelength and receives data at 1310 nm wavelength on optical fiber. Therefore, the terminal device used in conjunction with the TL-FC111A-20 should send

Fibre Channel Connectivity

Many optical modules also exceed the standard and most links do not go the full distance of the specification, so the links can operate with higher loss than the standard specifies. This statistical

Catalyst 6500 Series 10

CISCO CATALYST 6500 SERIES 10- AND 100-MBPS ETHERNET FIBER-BASED INTERFACE MODULES As the premier Cisco® modular multilayer switch, the Cisco Catalyst® 6500 Series

100M SFP Transceiver Modules Data Sheet | FS

The SFP-100LX-31 SFP transceiver supports up to 10km link lengths over single-mode fiber (SMF) using a wavelength of 1310nm via an LC connector. Featuring low power consumption,

Optical module

An optical module is a typically hot-pluggable optical transceiver used in high-bandwidth data communications applications. Optical modules typically have an electrical interface on the side that

Ethernet over fiber optic converter, Gigabit Ethernet Fiber

10/100/1000 Base-T SFP Fast and Gigabit Ethernet Fiber Media Converter PN: F-GET-TR-SFP-A and F-GET-TR-SFP-B Flexibility comes with the Standard SFP slot. Any SFP can be used according to

Catalyst 6500 Series 10

This data sheet describes the benefits, specifications, and ordering information for the Catalyst 6500 Series 10- and 100-MBPS Ethernet Fiber-Based

StarTech 100Mbps Fiber SFP Transceiver Module

With data transfer rates of up to 100Mbps and support for Digital Diagnostics Monitoring (DDM / DOM), this LC SFP module can be installed into fiber

Fiber Channel Transceiver Modules Datasheet | FS

The FC-SFP-16G-SWModule provides 16GBase-SR throughput up to 100m over multimode fiber (MMF) using a wavelength of 850nm via an LC duplex connector. This transceiver is compliant with SFF

100BASE FX SFP: Complete Guide to 100Mbps Fiber Transceivers

In summary, a 100BASE FX SFP combines the Fast Ethernet 100BASE-FX fiber standard with the flexible SFP form factor, providing a reliable 100Mbps optical connectivity option for environments

FC Optical Modules

FC Optical Transceivers Advanced optical modules from FC10G to FC400G engineered for high-speed fiber connectivity in data centers and enterprise networks, ensuring optimal signal integrity and

16G FC SFP+ 850nm 100m Module

The FC optical transceiver module follows the FC protocol and acts as an interface between fiber channel systems and also an interface between fiber storage network devices.

Pluggable Transceivers Installation Guide

Extreme Networks SFP Modules Extreme Networks switches and routers support SFP (small form factor pluggable) interface modules, also known as mini-GBICs.

100Base-FX SFP Multi-Mode LC Module (2km)

TRENDnet's 100Base-FX SFP Multi-Mode LC Module, model TE100-MGBFX, is compatible with standard SFP slots found on network switches and fiber media

StarTech MSA Uncoded Compatible SFP Module

StarTech Cisco Meraki Compatible SFP Module - 1000BASE-LX - 1GbE Single Mode Fiber SMF Optic Transceiver - 1GE Gigabit Ethernet LC 10km - 1310nm

## MSA Uncoded SFP Module

TESTED FOR COMPATIBILITY: Hot-swappable in MSA Compliant routers and switches; DDM support reports the transceiver's status to most SNMP network

## What You Need to Know About 1x9 Optical Transceivers

In the ever-evolving world of fiber optic communications, 1x9 optical transceivers remain a foundational component for legacy systems and specific

## 100FX SFP Module for Fast Ethernet Ports

The 100FX SFP module for fast Ethernet (FE) ports provides a 100-Mbps optical link using LC connectors and 1310-nm MMF (multimode fiber) cable. The maximum transmission distance for this

## Cisco GLC-FE-100FX Compatible SFP Module

Cisco GLC-FE-100FX Compatible SFP Module - 100BASE-FX - 100Mbps Multimode Fiber MMF Optic Transceiver - 100 Mbps - LC 2km - 1310nm - DDM Cisco

## 16G FC-SWL SFP+ Transceiver | 100m MMF

Supporting up to 100m transmission over multimode fiber at 850nm

## 100BASE-FX SFP 1310nm 2km Industrial Datasheet | FS

Description SFP-100FX-31 Small Form Pluggable (SFP) modules are based on the SFP Multi Source Agreement (MSA). It is compliant with the Gigabit Ethernet and 100BASE-T standards as specified in

## 10/100/1000Base-T RJ45 to 1000Base-FX SFP Fiber

10/100/1000Base-T RJ45 (100m/328ft) Gigabit Ethernet to 1000Base-FX Open SFP Fiber Media Converter (Distance depending on SFP module) The MC-GSA11-L is

## Intel 16G Fibre Channel SFP+ Transceiver Module 850nm 100m

The Intel compatible module provides 16GBase-SR throughput up to 100m over OM3 multimode fibre (MMF) using a wavelength of 850nm via an LC duplex connector. This transceiver is compliant with

## WI-MC101M 100Mbps Single Mode Fiber Optic Media Converter

The WI-MC101M is a media converter designed to convert 100BASE-FX fiber to 10/100Base-TX copper media or vice versa. Adopting WDM technology, WI-MC101M takes only one fiber cable to transmit

## Contact Us

For more information, pricing, or custom solutions, please contact us:

Website: <https://blazingfast.co.za>

Email: [info@blazingfast.co.za](mailto:info@blazingfast.co.za)

Phone: +27 83 416 7295

Address: Plot 45, Silicon Savannah Road, Tatu City, Kiambu 00900, Kenya

This document is for informational purposes only. Specifications subject to change without notice.

