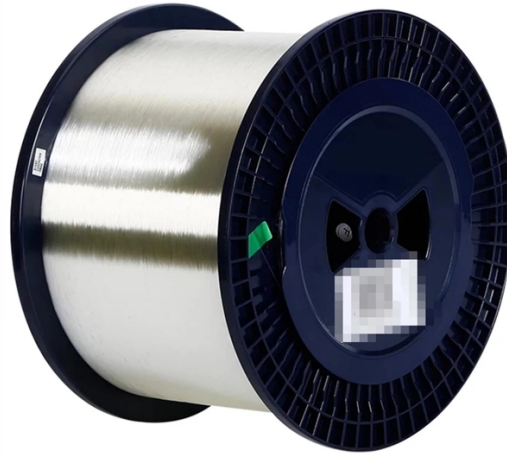


# Cable Tray Support and Hanger Construction Plan



## Overview

This AutoCAD DWG file provides a comprehensive cable tray installation plan, featuring detailed support rod, duct, and expansion joint specifications. Our focus has always been on solutions from the field of cable support systems. The mechanical and electrical characteristics, tests, certifications, overall quality management, recommendations mentioned in this technical guide only apply to our own cable management ranges and cannot under any circumstances be transposed to si osure, overheating or. Method Statement installation of Cable Trays and Ladders - Planning Engineer FZE. The Cable Tray system is installed in electrical rooms, plant rooms, and service. With the RS 60 cable tray installation system, we offer you the last installation type of the standard support construction, so that you can implement all installations required in the building project with circuit integrity maintenance on the basis of the standard support construction. - Installation of perforated GI Cable tray of size 300 x 50 mm at height ~12 meter on wall and existing metal support structure.



## Article Content

Beama Best Practice Guide | Installation Of The System | Cable ...

The following recommendations are intended to be a practical guide to ensure the safe and proper installation of cable ladder and cable tray systems and channel support and other support systems.

A Guide To Cable Support Systems

There is a wide range of cable support systems. While certain configurations offer clear advantages, others are simply designed with

Ladder Type Cable Tray Drawings

This document contains engineering drawings for ladder cable trays, hold down clamps, and general notes. The drawings are for a construction project in Mekele,

Installation of Cable Tray, Trunking And Accessories

Before beginning installation, be sure that the method statement for installation of cable tray, trunking, and accessories is approved by the project and construction manager before the

Decoding Cable Tray Support Structures: Tips and Insights

Discover efficient cable tray support structures for optimal cable management. Learn about hanger, wall-mounted, and Unistrut systems for safer

Cable Tray Technical Guide A practical guide to product selection and ...

SOLID-BOTTOM CABLE TRAY Providing additional cable protection, solid-bottom cable tray is sometimes preferred to support and protect numerous small instrumentation and control cables.

Technical Specification for Cable tray installation and cable laying work

Approval of IPR shall be obtained for site preparation and marking the cable tray routes and locations of cable tray support before proceeding with the erection and installation work.

Cable Tray Layout & Section (Electrical) | PMG Engineering

Explore the essentials of cable tray layout and section design in electrical systems, ensuring optimal cable management and support.

Master Cable Tray Installation: A Professional Step-by

Learn how to install cable trays for large-scale projects with our professional, step-by-step guide covering industry standards, safety protocols,

Method Statement installation of Cable Trays and Ladders

This method statement covers the site installation of the cable tray & ladders and the requirements of checks to be carried out.

### Cable Tray Systems: Requirements and Best Practices

Comprehensive guide to cable tray systems requirements: tray types, materials, loading, supports, bonding, routing, and best practices for safe electrical cable management.

### Guide to cable support systems

A cable support system consists of cable support lengths and system components, such as cable support fittings, support elements, mounting elements and system accessories.

### Best Practice Guide to Cable Ladder and Cable Tray Systems

This guide covers cable ladder systems, cable tray systems, channel support systems and associated supports intended for the support and accommodation of cables and possibly other electrical

### Method Statement for Installation of Cable Tray or Trunking

On completion of cable tray/ ladder installation including fittings, inspect exposed finish. Remove burrs & construction debris and repair damaged finishes

### How to Calculate the Cable Tray Support Quantity

Learn how to accurately calculate cable tray support quantities in electrical installation projects. Our guide covers methods, tools, and practical

### Cable Tray Installation Guidelines | PDF | Galvanization

This document provides details on installing cable trays and their support systems. It includes diagrams showing how to mount cable trays on walls using pre

### Cable Tray Installation Method Statement

This document provides a method statement for installing cable trays and trunking systems for building electrical services. It outlines 14 steps for the installation

### Cable Tray Installation Plan with Duct and Support Details

Download a detailed cable tray installation plan DWG file with support rod, duct, expansion joint details, and dimensions for efficient electrical installation.

### GUIDE CABLE TRAYS TECHNICAL

This eco-declaration is neither a label nor a regulatory marking, but the PEP does constitute an essential decision support tool for any company signed up to an environmentally-responsible construction

### Standard Support Construction Of The Cable Tray RS

With the RS 60 cable tray installation system, we offer you the last installation type of the standard support construction, so that you can implement all installations

## CABLE TRAY SYSTEMS GUIDE

Steel Ladder System Hubbell's NEXTFRAME® Ladder Tray is the effective and widely used cable runway that supports and delivers bundles of cable between cabinets, racks, and closets, along

Electrical cable Tray Installation Details with Support

Comprehensive technical drawing illustrating various cable tray installation details for electrical systems. The document includes multiple configurations for mounting

How to install Cable Trays - Best Guide in 2026

Step-by-step on-site guide: learn how to plan, mark, support, and install cable trays correctly, from shop drawing approval to final checks.

A Guide to Installing and Supporting Electrical Cable Trays

A professional guide to installing electrical cable tray systems per NEC Article 392. Covers support, securing cables, and fill calculations.

## Contact Us

For more information, pricing, or custom solutions, please contact us:

Website: <https://blazingfast.co.za>

Email: [info@blazingfast.co.za](mailto:info@blazingfast.co.za)

Phone: +27 83 416 7295

Address: Plot 45, Silicon Savannah Road, Tatu City, Kiambu 00900, Kenya

This document is for informational purposes only. Specifications subject to change without notice.

