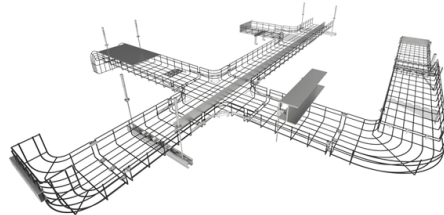


## Cable trays are fixed with bolts



### Overview

The cable trays are fastened to the cantilever brackets with 2 mushroom head bolts (FLM 6X12/FLM 6X16 F). The threaded rod can also be fastened directly to the solid ceiling without the DBG 12 articulated ceiling bracket using fasteners that have been verified for fire. The screw-on cable tray systems are used to support and route all kinds of cables, taking the approved load values into account. Depending on the corrosion protection used, they can be mounted both indoors and outdoors. The mechanical and electrical characteristics, tests, certifications, overall quality management, recommendations mentioned in this technical guide only apply to our own cable management ranges and cannot under any circumstances be transposed to si osure, overheating or. Cable trays with a rail height of 60 mm, in widths of 100 to 300 mm (RS 60. For proper installation, design, and maintenance, adherence to international standards is essential. When it comes to fixing and mounting cable trays, these methods should be considered: Suspended Mounting with Rods: This method uses threaded rods to suspend the cable tray.



## Article Content

How to Install Cable Tray: A Comprehensive Guide to Different Cable ...

Welcome to our step-by-step guide on installing cable trays! In this video, we'll explore the different types of cable trays available and provide detailed instructions for their installation.

IEC Standard for Cable Tray: Complete Technical Guide

IEC 61537 is the internationally recognized benchmark for metal cable tray systems. It applies to cable trays made of steel, stainless steel, aluminum, or

Master Cable Tray Installation: A Professional Step-by

Learn how to install cable trays for large-scale projects with our professional, step-by-step guide covering industry standards, safety protocols,

GUIDE CABLE TRAYS TECHNICAL

NEMA VE 1-2017 Specifies requirements for metal cable trays and associated fittings designed for use in accordance with the rules of Canadian Electrical Code, Part I and the National Electrical Code®

Cable Tray

The cable trays are fastened to the cantilever brackets with 2 mushroom head bolts (FLM 6X12/FLM 6X16 F). The threaded rod can also be fastened directly to the solid ceiling without the DBG 12

BZP Cable Tray Bolts and Serrated Flange Nuts

M6x12 BZP Cable Tray Bolts and Serrated Flange Nuts (P) Product Code: N402-306  
These tray bolts and serrated flange nuts are specially designed for the rapid

Cable Tray Accessories, Cable Tray Hangers & Support | RS

A functional cable tray system consists of various clamping, supporting, and splicing accessories in order to achieve the best possible system. Other add-ons include plastic nuts, bolts, swift clips, wire

Fischer FXA Through Bolts – M8 x 91mm

Shop Fischer Fxa Through Bolts M8 x 91mm at Tradefix Direct. Wide range of products at low trade prices. Large discounts on bulk orders. Order online.

Guide to cable support systems

The mesh cable trays are suitable for the installation of power cables and cables in various areas of application. The grid spacings mean that cables can be inserted and run out in various directions.

## Cable Tray Installation Guidelines

The document provides installation guidelines for cable trays. It states that cable trays should be individually connected using bolted connections, and welded earthing conductors should be installed.

### Mounting instructions

5.2.1 Fittings The fittings can be used for cable trays of widths of 100 to 600 mm and the heights 35, 60, 85 and 110 mm. The fittings can fastened to the cable tray rail either with double clamps of type DOP

### Connecting Cable Trays: Your Guide to Secure and

We fix them with nuts and bolts through the holes in the plate and the tray sides. This is the most common method in industrial projects because it

### Cable Tray Installation Method Statement

All the cable trays and trunking covers shall be secured with proper clamps or screws fixed with supports. Ensure the gaps between the trays which are mounted in

### Fischer Fxa Through Bolts M10 x 126mm | Tradefix Direct

Shop Fischer Fxa Through Bolts M10 x 126mm at Tradefix Direct. Free next day delivery on orders over £60. Large discounts on bulk orders. Order online.

### Best Practice Guide to Cable Ladder and Cable Tray Systems

This guide covers cable ladder systems, cable tray systems, channel support systems and associated supports intended for the support and accommodation of cables and possibly other electrical

### Cable Tray Installation Guidelines | PDF | Galvanization

This document provides details on installing cable trays and their support systems. It includes diagrams showing how to mount cable trays on walls using pre

### Best Fixing and Mounting Options for Cable Trays | CMW

Discover the best fixing and mounting options for cable trays and wire mesh basket trays. CMW shares tips for efficient cable management.

### Mounting instructions

The screw-on cable tray systems are used to support and route all kinds of cables, taking the approved load values into account. Depending on the corrosion protection used, they can be mounted both

### A Guide to Cable Tray Accessories and Their Functions

U-bolt clamps provide secure fastening between cable trays and support rods, pipes, or C-channels. They prevent lateral movement, vibration, or

Cable Tray Technical Guide A practical guide to product selection and ...

Cable tray is considered to be a system. It must provide continuous support for cables, and the electrical continuity of the cable tray system must be maintained.

#### GUIDE CABLE TRAYS TECHNICAL

In accordance with its continuous improvement policy, Legrand reserves the right to change the specifications and illustrations without notice. All illustrations, descriptions and technical information

Cable Tray Technical Guide A practical guide to product selection and ...

Cable Tray Technical Guide A practical guide to product selection and installation This guide for engineers and installers has been developed by ABB as a practical reference regarding cable tray

#### Efficient Cable Tray Installation Methods for Organized

Discover efficient methods for installing cable trays to organize power, data, and security cables. Explore wall, ceiling, and floor mounting options

Best practice guide to cable ladder and cable tray

Cable ladder and cable tray systems The following recommendations are intended to be a practical guide to ensure the safe and proper installation of

#### Cable Tray Bolts

Cable Tray Bolts Specifically designed to provide a rapid and secure fixing when erecting cable trays. The fixed washer to flange nut prevents it from falling into

## Contact Us

For more information, pricing, or custom solutions, please contact us:

Website: <https://blazingfast.co.za>

Email: [info@blazingfast.co.za](mailto:info@blazingfast.co.za)

Phone: +27 83 416 7295

Address: Plot 45, Silicon Savannah Road, Tatu City, Kiambu 00900, Kenya

This document is for informational purposes only. Specifications subject to change without notice.

