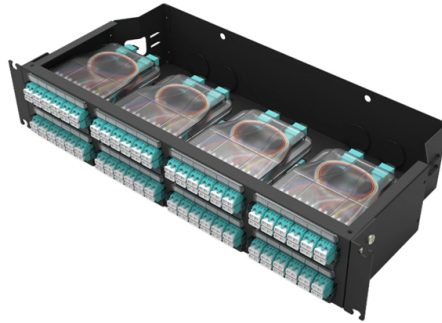


# Grounding wire of external distribution box



## Overview

26 mm<sup>2</sup> (10 AWG) ground wire must be used, and in all other markets a 6 mm<sup>2</sup> must be used. Power from factory ground must be installed by a qualified electrician. Grounding of the units: Attach a ground wire from one of. Whether you're a seasoned pro or just starting out, this comprehensive guide will give you practical insights into proper grounding techniques, with a special focus on how selecting quality materials from a reliable building material supplier impacts your entire system's safety and longevity. The correct connection method of Distribution box grounding wire mainly includes the following steps: 1. This helps to reduce the potential difference that exists between conductive parts and the earth. Preparation: First, you need to prepare some necessary tools, including grounding wire, grounding rod, voltmeter, insulating gloves and insulating tools.

## Article Content

How To Ground Your Electrical Panel and Service Disconnect

Electrical Grounding & Bonding: Top Mistakes to Avoid for a Successful Installation: Don't make common mistakes that can lead to a dangerous electrical system. Follow this video to learn what to ...

Grounding Requirements for Electrical Cables, Cable Trays, and

Guidelines for grounding electrical cables, busbars, and cable trays in wiring projects, ensuring safety and compliance with industry standards.

Electric system ground system inspection

Electrical ground system inspection procedures & checklists. This document discusses procedures the inspection of the grounding system components of a building electrical system when performed by

Distribution System Grounding

Good system grounding provides the path for normal load and fault currents while maintaining load and controls temporary overvoltages. Good equipment grounding ensures

Grounding Practices in Power Distribution Systems

The installation of grounding methods for transmission lines is absolutely necessary in order to guarantee the safety, dependability, and effectiveness of power

Correct Connection Method Of Grounding Wire Of

Generally, copper core wire is selected as the ground wire and connected to the PE wiring bar. When connecting, it is necessary to strip the wire

How to Wire an Electrical Circuit Breaker Panel

Open Knockouts in Box The electrician then opens metal knockouts for the main service conduit and each branch circuit that

Electrical Panel Grounding and Bonding

The topic of grounding and bonding is a never ending area of confusion. The difference between a service panel and a sub panel is also muddy in many

DISTRIBUTION BOX

Each DISTRIBUTION BOX and controller must be grounded. On the US market, a 5.26 mm<sup>2</sup> (10 AWG) ground wire must be used, and in all other markets a 6 mm<sup>2</sup> must be used.

Distribution box with standard cable (for up to 4

With this convenient distribution box with a standard pin cable you can connect up to 4 grounding products with a grounded wall socket or a grounded extension cord

Distribution System Grounding | part of Electric Power and Energy ...

Good system grounding provides the path for normal load and fault currents while maintaining load and controls temporary overvoltages. Good equipment grounding ensures personnel safety.

How to Ground an Electrical Panel: A Complete Guide

What is Electrical Panel Grounding? Electrical panel grounding means linking a system panel to the ground through earth electrode like rods and

9 Recommended Practices for Grounding

Use equipment grounding conductors sized equal to the phase conductors to decrease circuit impedance and improve the clearing time of

The Basics of Grounding and Bonding

Article 250 of the NEC covers the grounding and bonding of electrical systems. By definition, as well as by function, grounding and bonding are not the same thing.

System Grounding

Abstract: System grounding considerations affect many aspects of an electrical system. Knowledge of the various types of system grounding and performance characteristics is critical when designing or

Grounding and UL 508A Standards

Additional rules for the grounding and bonding of industrial control panels include the sizing of ground conductors and the conditions that dictate

Stainless Steel Distribution Box Installation Manual: How To Properly ...

When inspecting the interior of a stainless steel outdoor electrical box distribution box, pay attention to the copper or tin-plated terminals on the base plate or side walls. These locations are usually marked

Practice for good grounding and bonding a home wiring

Bonding and grounding explained All home electrical systems must be bonded and grounded according to code standards. This entails two tasks: First,

Grounding System Installation Standards for Distribution Boxes and ...

Whether you're a seasoned pro or just starting out, this comprehensive guide will give you practical insights into proper grounding techniques, with a special focus on how selecting quality materials

The installation requirements for the distribution box

Learn how to install a distribution box safely and correctly. Covers wiring, placement, standards, and expert tips for a compliant setup.

Outdoor Electrical Distribution Box Specifications: NEC

Complete specification guide for outdoor electrical distribution boxes covering NEC Article 312 requirements, NEMA ratings, sizing calculations, and

how do you ground a plastic electrical box

Here are the steps on how to ground a power distribution box: 1. Preparation: First, you need to prepare some necessary tools, including

Does the Distribution Box Door Need Grounding? Safety Standards FAQ

Grounding a distribution cabinet door might feel like tedious "box-ticking," but remember—it's about people. That wire ensures no voltage lurks where hands touch

## Contact Us

For more information, pricing, or custom solutions, please contact us:

Website: <https://blazingfast.co.za>

Email: [info@blazingfast.co.za](mailto:info@blazingfast.co.za)

Phone: +27 83 416 7295

Address: Plot 45, Silicon Savannah Road, Tatu City, Kiambu 00900, Kenya

This document is for informational purposes only. Specifications subject to change without notice.

