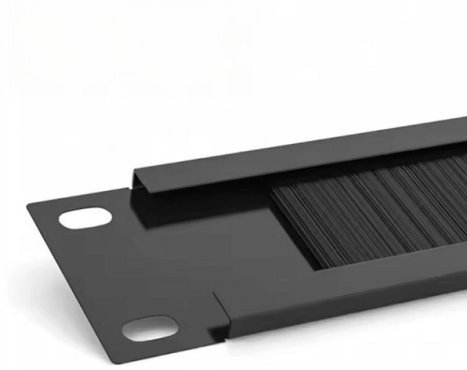


## Huawei OLT Enhanced Board Optical Module Model



### Overview

The Huawei H902EPHF01 is a sophisticated 16-port advanced EPON OLT interface board. Designed to optimize network performance, it includes the PX20+ optical module to deliver superior connectivity and reliability for modern telecommunication infrastructures. It provides multiple fiber to the home (FTTH) solutions to meet the requirements of economical and efficient network construction. Controlling modules to complete single board software loading, operation control, management and other functions. providing a working power supply for each function module in a single board. With lightning-fast speeds of up to 10Gbps, this compact and durable transceiver ensures seamless streaming, rapid downloads, and smooth browsing experiences. It supports the PON/10G PON/50G PON/GE/10GE shared platform. The MA5800 adopts the distributed architecture and supports multi-media gigabit aggregation, optimal 4K/8K/VR video experience.



## Article Content

OptiXaccess MA5801S (Blade OLT)

OptiXaccess MA5801S (Blade OLT) MA5801S is an outdoor compact OLT for the gigabit era, providing end users with optimal experience. It provides 16 GPON

Huawei EA5801E-GP08-GP16-GP04-Optical Access

Huawei OptiXaccess EA5801E-GP16 is a compact and low-density OLT that carries all services over a single fiber network, simplifying network architecture.

H902EPHF01, Huawei OLT Board, 16-port EPON/PX20+ module

The Huawei H902EPHF01 is a sophisticated 16-port advanced EPON OLT interface board. Designed to optimize network performance, it includes the PX20+ optical module to deliver superior connectivity

HUAWEI GPFD 16 Port GPON With B+ C+ C++ SFP Modules

Huawei GPFD Service Board is a 16 port GPON interface card This board offers GPON service access from ONT which get maximum access 16\*128 GPON subscribers. The OLT product is positioned as

Huawei SmartAX EA5800 OLT Overview

The document is a datasheet for the Huawei SmartAX EA5800 OLT, which is a next-generation optical line terminal that provides a unified platform for multiple

Huawei SmartAX EA5800 Series OLT | Huawei Enterprise

One optical network covers all services, simplifying network architecture and reducing Operating Expenditure (OPEX). EA5800 is available in small, medium,

Huawei GPBD 8-Port GPON OLT Brand New Interface

The Huawei GPBD 8-Port GPON OLT Interface Board is a high

Huawei MA56xx OLT Command Lists

Huawei MA56xx OLT Command Lists: View the current OLT version & patch: display board 0 display version display current-configuration display time

MA5800 | Access | OLT | FTTH | Huawei Enterprise

The MA5800 multi-service access device is a 4K/8K/VR-ready OLT in the gigabit ultra-broadband era. It supports the PON/10G PON/50G PON/GE/10GE shared

MA5801 OLT Board info

MA5801 OLT is an integrated 1RU OLT which control and service module integrated, 1 pluggable fan module and 2 pluggable power modules.

## Huawei H901NXED 8-port Enhanced 10GE Uplink Interface Board

Cheap Price Huawei H901NXED 8-port Enhanced 10GE Uplink Interface Board datasheet download pdf, welcome to buy Huawei routers, Huawei Switches, Huawei GPON Network, Huawei SDH Network,

## H901NXED 10GE Uplink Board of Huawei MA5800 OLT

The H901NXED is an 8-port upstream interface board providing 10GE/GE optical ports designed for Huawei's MA5800 series Next-Generation OLT. Its primary

## Huawei H806GPFDF Brand New 16-Port GPON OLT Interface Board

The Huawei H806GPFDF is a high-performance 16-port GPON OLT (Optical Line Terminal) interface board designed for seamless integration with Huawei's MA5600T series, including the MA5608T,

## Huawei GPFDF 16-ports Gpon OLT Interface Board

Brand: HUAWEI Model: GPFDF GPON Port: 16-GPON Port Category: Huawei OLT Type C+ Module : One-fiber bi-directional optical module, class C+ Operating

## SmartAX MA5800

The SmartAX MA5800 frame-shaped series is available in four models: MA5800-X17, MA5800-X15, MA5800-X7, and MA5800-X2. They are applicable in FTTB,

huawei olt card CSHF 16 ports XGS-Gpon board with

This board is used in MA5800,EA5800 Series OLT Equipment and works together with optical network unit to offer XGS-PON and GPON access services. Huawei

## Huawei SmartAX MA5800 Support Guide, Manuals & PDF - Huawei

Find technical support resources for Huawei SmartAX MA5800, including product documentation, software downloads, and troubleshooting guides.

## Huawei OptiX OSN 8800 and Boards Datasheet

Huawei OptiX OSN 8800 Intelligent Optical Transport Platform (OptiX OSN 8800 for short) is a new generation of intelligent MS-OTN product. It is a future-proof product launched to address the IP

## H802GPFDF C+ Huawei Brand New 16Port GPON OLT Interface Board

The H802GPFDF C+ Huawei Brand is a brand new 16-port GPON OLT interface board designed for Huawei's MA5600T and MA5680T optical line terminal platforms.

## Huawei OLT Series Product Catalog

Check Huawei OLT Series product catalog, product description and pricing information at [itprice](#)

Huawei Gpon Olt C+ Optical Transceiver on Gpon

Introducing the Huawei XGPON OLT N2a Optical Transceiver - the ultimate

Huawei GPFD| 16-ports Gpon OLT Interface Board

Exchanging module to achieve the convergence of 16 GPON port signals. Controlling modules to complete single board software loading, operation control,

SFP GPON OLT B+ Gpon price and specs gpfd gpbd

SFP GPON OLT B+ is used with Huawei OLT Gpon Service Board like GPFD GPBD GPBH GPBH etc SFP GPON OLT B+ Product Overview SFP GPON OLT B+ is a

Huawei SmartAX EA5800 OLT Datasheet

Overview Developed based on the distributed architecture, the EA5800 series multiservice access device is positioned as the next-generation OLT for NG-PON. With virtual access technology, it

MA5800-X17& X15& X7& X2 Product Datasheet

Flex-PON A Flex-PON board supports GPON, XG-PON, XGS-PON, XG-PON& GPON combo, XGS-PON& GPON combo and TWDM PON with the corresponding optical module, and

MA5801 | OLT | FTTH | Huawei Enterprise

As optical fiber access nodes keep moving closer to end users, OLTs are closer to end users. Deployment scenarios are complex and diversified. In this case, network needs OLTs with small

Huawei GPON GPHF Board 16 PON Ports Interface Card with B+ C

Whether implemented in small communities or large urban developments, the GPHF stands as a cornerstone of modern optical network deployments, ensuring a robust, future-proof infrastructure for

MA5801 | OLT | FTTH | Huawei Enterprise

The MA5801 series OLT is a compact and low-density box-shaped OLT. It provides multiple fiber to the home (FTTH) solutions to meet the requirements of economical and efficient network construction.

Displaying Optical Module Information

When certifying an optical module, Huawei comprehensively verifies the functions of the optical module to ensure the optical module quality. The functions include the installation and removal, transmit and

## Contact Us

For more information, pricing, or custom solutions, please contact us:

Website: <https://blazingfast.co.za>

Email: [info@blazingfast.co.za](mailto:info@blazingfast.co.za)

Phone: +27 83 416 7295

Address: Plot 45, Silicon Savannah Road, Tatu City, Kiambu 00900, Kenya

This document is for informational purposes only. Specifications subject to change without notice.

