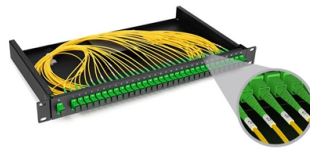


## Installation height of outdoor temporary power distribution box



### Overview

The proper installation of a distribution box involves placing it at the right height to ensure safety and convenience. Check for proper IP/NEMA ratings and material quality. Ensure safe placement: install in dry, accessible areas with good ventilation and at appropriate height (typically ~1. This outdoor Plot & Service junction box will be utilised for providing/interconnecting service main of distribution network. Applicable Standards: 1200V DC. It is recommended to use a. work requires electrical power for many purposes. However, exposure to weather, frequent relocation, rough use and other conditions not normally encountered with conventional wiring systems necessitate special consideration not require in other applications or in completed structures.



## Article Content

How to Build a DIY Temporary Power Distribution Box

Securely manage job site power. Build a compliant temporary distribution box, detailing component sizing, critical grounding, and wiring integrity.

Expert Guide: Select the Right Temporary Power Distribution Box

The right distribution box that matches your power requirements, durability needs, and weather resistance will give optimal performance for specific applications. Note that successful power

Requirements And Specifications For Installation Of

Installation height and fixing method: The bottom edge of the distribution box is usually between 1.5 meters and 1.8 meters above the ground,

Outdoor Power Distribution Boxes: The Backbone of

Discover how J& HW Group's outdoor power distribution boxes deliver safe, weatherproof, and customizable solutions for modern industrial and

TEMPORARY POWER

On temporary distribution installations, special consideration should be made to earth fault loop impedance on final circuits. The use of extension leads in series can cause the earth fault loop

Temporary Power Pole Requirements: Everything You

A temporary power pole should be 16–24 feet tall, with a weatherproof meter socket, main breaker panel, grounding rods, and GFCI-protected outlets. Check with your

TECHNICAL SPECIFICATION FOR OUTDOOR TYPE

The enclosure shall be suitable for Outdoor installation. The enclosure shall be made from cold rolled sheet steel of thickness 2.5 mm and shall be suitable to withstand rough usage and weather.

Outdoor Electrical Outlet Installation Without the

Outdoor outlet safety guide Outdoor Electrical Outlet Installation Without the Extension-Cord Circus Adding power outside is a smart upgrade for patios,

The installation requirements for the distribution box

This specification guide provides system designers, electrical engineers, and procurement professionals with the technical criteria needed to

Temporary electrical wiring for construction sites

Power lines are constant hazards in a construction area. If a power line must be protected or moved, contact utility company before with the construction process or equipment. Where this is not

### Temporary Power Distribution Boxes for Electrical

Temporary power distribution boxes for flexible electrical installation. Robust solutions for construction sites, events and temporary energy infrastructure.

### Power Tech Temporary Power Distribution Box

Power Tech Temporary Power Distribution Box, ETL approved for indoor/outdoor use. Features 15/20A outlets & 30A/50A Twistlocks for contractor needs.

### Electrical Power Distribution Boxes for Temporary Event

Conclusion Power distribution boxes are an integral part of any temporary event setup, ensuring that power is delivered safely and efficiently to

### What is the Ideal Installation Height for a Distribution Box

The proper installation of a distribution box involves placing it at the right height to ensure safety and convenience. Mounting it 4.5 to 5.5 feet (1.4 to 1.7 meters) high

### Outdoor Electrical Panel Box: Expert Guide to Safe Installation

Outdoor Electrical Panel Box: Expert Guide to Safe Installation An outdoor electrical panel box, often called a subpanel, is a crucial component for distributing power to exterior locations

### How To Maximize Worksite Safety When Using Power Distribution Boxes

Power distribution boxes are designed to be rugged, durable, and dependable in even the most challenging situations and outdoor environments. Safety Standards for Temporary Power

### The Ultimate Guide to Temporary Power Distribution Boxes

Learn all about temporary power distribution boxes, their applications, advantages, and how to choose the right one for your needs.

### Electrical Code rules for portable and temporary electrical power ...

Electrical Code rules for portable and temporary electrical power distribution This document is a summary of rules based on the National Electrical Code (NEC). Refer to the NEC for additional rules.

### Temporary Power Pole Diagram and Installation Guide

Learn about the layout and components of a temporary power pole, including wiring, safety features, and installation guidelines for temporary power supply setups.

### Temporary Power Distribution Box for Construction Sites and Outdoor ...

Learn how CEE socket distribution boxes, IP-rated outdoor electrical enclosures, emergency stop buttons, elevated stands, and structured wiring reduce water ingress, cable

Understanding Outdoor Power Distribution Box: A

Conclusion Outdoor power distribution boxes are an essential component of any outdoor power setup. Whether you're organizing an event,

Temporary Power Pole Requirements: Everything You

Events, outdoor markets, and emergency response teams also use them to power up temporary setups. Here's what you need to know about temporary power pole

Temporary Power Distribution Box for Construction Sites and Outdoor ...

A proper temporary power distribution box must do more than distribute electricity. It must protect people, protect equipment, reduce installation chaos, and make emergency control simple.

## Contact Us

For more information, pricing, or custom solutions, please contact us:

Website: <https://blazingfast.co.za>

Email: [info@blazingfast.co.za](mailto:info@blazingfast.co.za)

Phone: +27 83 416 7295

Address: Plot 45, Silicon Savannah Road, Tatu City, Kiambu 00900, Kenya

This document is for informational purposes only. Specifications subject to change without notice.

